

## Miniature recorder with 8 analog inputs

- 8 analog DC voltage or 20mA current inputs.
- Long battery life (up to 2 years).
- Miniature.
- Easy to connect and to use.
- Recorded data processed by PC in real engineering units.
- Cost effective and suitable to be used in quantities for long periods.
- Real time measurements output.



## Applications

Waste water treatment monitoring.  
Environmental measurements.  
Process monitoring.  
Quality control  
Maintenance.  
Medical applications.

VL100 recorders are also proposed as OEM products, with or without housing, for integration into equipments like medical devices, gas analyzers, production control devices, etc...

They may be adapted for networking (RS485). DLL components are proposed to help integration of μLOG data into customer's software.

## VL100 recorders and accessories :

VL100	: eight 0-1V DC common point inputs. eight (0)4-20mA inputs, with C18x20mA cable.	C18xV	: Connection cable for eight direct inputs.
VL100S	: eight 0-100mV to 0-30V common point inputs (range must be specified on order).	-EXT	: Memory extension to 60.000 measurements (capacity x 4).
C18x20mA	: Connection cable for eight (0)4-20mA common point inputs, L=2m; mixed 0-1V and 4-20mA inputs on request.	D9-2FM	: PC connection cable.
		RDFIX	: DIN rail fixation adapter.
		μLOGVL	: VL100 Windows™ software.

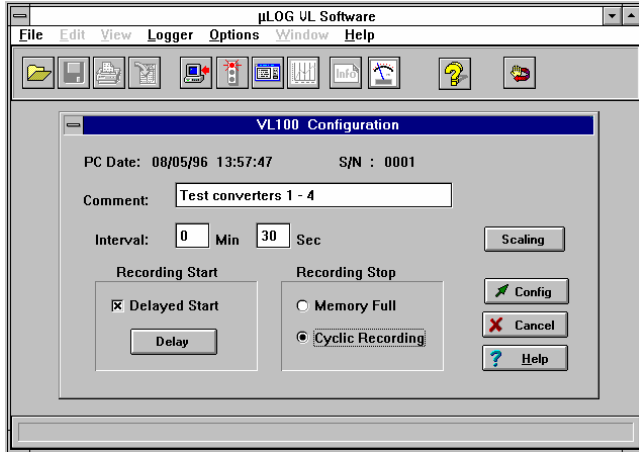
# μLOGVL Software

The user-friendly Windows™ μLOGVL software allows for configuration of VL100 recorders and for processing recorded measurements.

## Configuration :

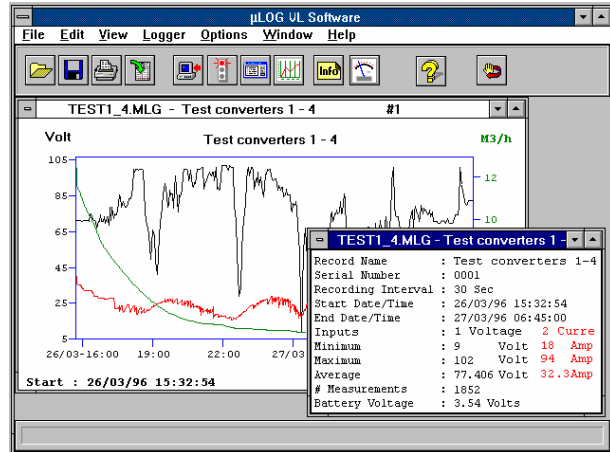
Setting general parameters as identifier, recording interval, delayed start of not, stops when memory full or overwrites.

Setting parameters concerning each input individually : activity, function, unit, maximum and minimum scale.



## Processing :

Download and saving of recordings, graphic display, statistical calculations, export to other software (EXCEL) and display on screen of current measurements.



# Technical Specifications

- **Inputs** : 8 common point 0-1Volt DC (standard) inputs, (0)4-20mA inputs with CI8x20mA cable; other on request.
- **Input impedance** : 1 Mohm (standard), 50 Ohm (20mA).
- **Resolution** : 5 mV (8 bits) for 0-1Volt DC inputs.
- **Accuracy** : ±1%.
- **Power supply** : (disposable) lithium battery, ± 2 years life.

- **Memory capacity** : 15.000 readings as standard or 60.000 readings (option).
- **Admitted input voltage** : 0 to +20 Volt (protected up to 200 V) for 0-1 Volt DC inputs.
- **Input signal connection** : Dsub9M connector.
- **Dimensions** : 65 x 50 x 35 mm.
- **Weight** : 100g (inclusive battery).

# μLOG general specifications

- **Recording interval** : 1 second to 60 minutes (on configuration).
- **Starting recording** : on programmed date and time or without delay.
- **Stop on memory full or overwrite oldest records (FIFO).**
- Possible to download while still recording.
- Real time clock, year 2000 compatible.
- **Security** : automatic stop on low battery, non volatile memory.

- **Communication** : RS232 interface - DSub 9F connector.
- **Temperature** : working -20°C to +65°C.
- **Software** : under Windows (95, 98, NT4, NT2000, XP); recorder configuration, download and saving of recordings, graphic plot, real-time display of measurements, export of recordings to Excel, etc...



Portable recorders for cathodic protection

Dedicated recorders