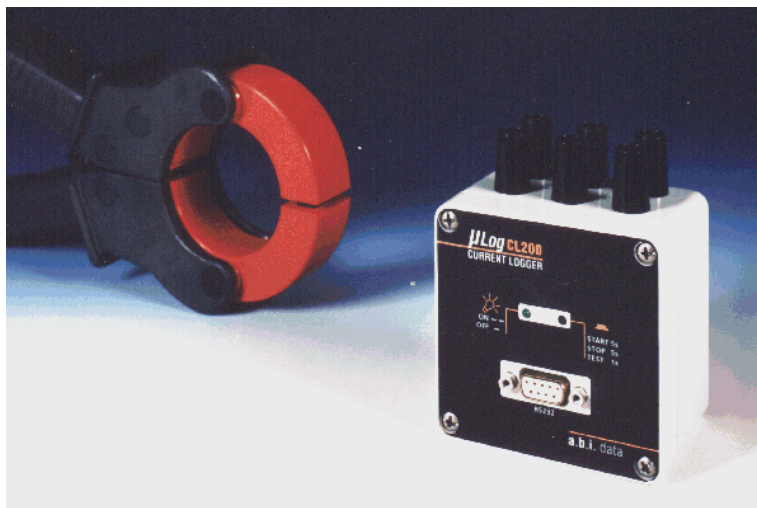


AC current recorder for clamp probes and current transformers

- Three phase recorders.
- Suitable for most usual current clamp probes with AC output and for CT.
- Long battery life (up to 2 years).
- Miniature.
- Easy to connect and to use.
- Recorded data processed by PC in real engineering units.
- Cost effective and suitable to be used in quantities for long periods.
- Real time measurements output.



Applications

Recording (over) load in cables and transformers.
Aerial electricity distribution (recording in post-mounted enclosures).
Power management (quarter hour peaks).
Monitoring periodic current evolutions on long run.
Phase balance monitoring.

CL200 recorders and accessories :

CL203-1A	: 3 x 1A AC current inputs; 60.000 readings memory.	D9-2FM	: PC connection cable.
CL203-5A	: 3 x 5A AC current inputs; 60.000 readings memory.	RDFIX	: DIN rail fixation adapter.
CL203-1V	: 3 x 1V AC voltage inputs, (other on request); 60.000 readings memory.	CURRENT PROBES	: Various types of clamp-on current probes ranging from 10 to 3000A AC.
CL203-xV	: 3 x xV voltage inputs (specified on order); 60.000 readings memory.	μLOGCL	: CL200 Windows™ software.

μLOGCL Software

The user-friendly Windows™ μLOGCL software allows for configuration of CL200 recorders and for processing recorded measurements.

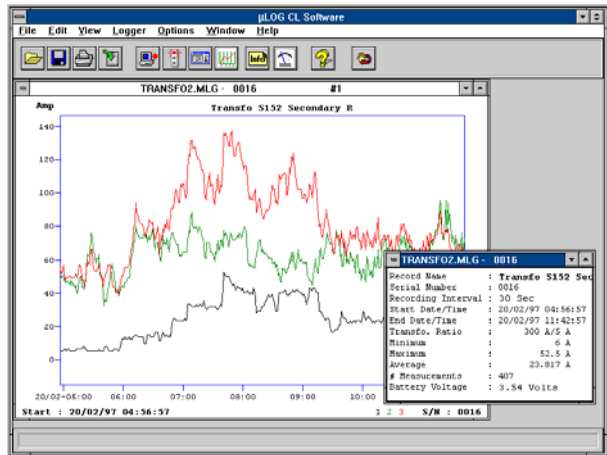
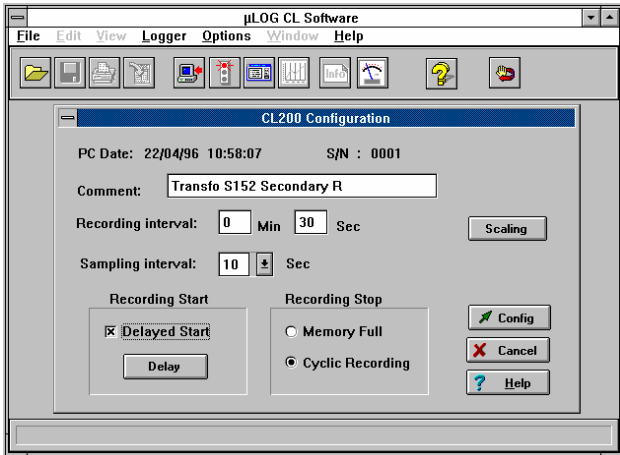
Configuration :

Setting general parameters as identifier, recording interval, delayed start of not, stops when memory full or overwrites.

Setting parameters concerning each input individually : activity and primary full scale current of the current transformer.

Processing :

Download and saving of recordings, graphic display, statistical calculations, export to other softwares (EXCEL) and display on screen of current measurements.



Technical Specifications

- **Input(s)** : AC 50 Hz (60Hz option), for straight connection to current clamp probes or CT (current transformers); 3 current or voltage inputs with one single range (1A/5A/1V).
- **Acceptable input current surge** : 20% (1.2A for 1A inputs; 6A for 5A inputs).
- **Accuracy** : ±1% (frequency of 50Hz + 5%).
- **Power supply** : (disposable) lithium battery, 6 months to 2 years life.
- **Memory capacity** : 60.000 readings.
- **Sampling interval** : 1 to 30 seconds.

- **Recording interval** : average of sampled values recorded every 1 second to 60 minutes (minimum setting = sampling interval).
- Possibility to start recording by switch (without need of a PC).
- **Input connections** : insulated 4mm security banana sockets.
- **Dimensions** : CL203 : 100 x 82 x 55mm.
- **Weight** : 250g (inclusive battery).

μLOG general specifications

- **Recording interval** : 1 second to 60 minutes (on configuration).
- **Starting recording** : on programmed date and time or without delay.
- Stop on memory full or overwrite oldest records (FIFO).
- Possible to download while still recording.
- Real time clock, year 2000 compatible.

- **Security** : automatic stop on low battery, non volatile memory.
- **Communication** : RS232 interface - DSub 9F connector.
- **Temperature** : working from -20°C to +65°C.
- **Software** : under Windows (95, 98, NT4, NT2000, XP); recorder configuration, download and saving of recordings, graphic plot, real-time display of measurements, export of recordings to Excel, etc...



Portable recorders for cathodic protection

Dedicated recorders